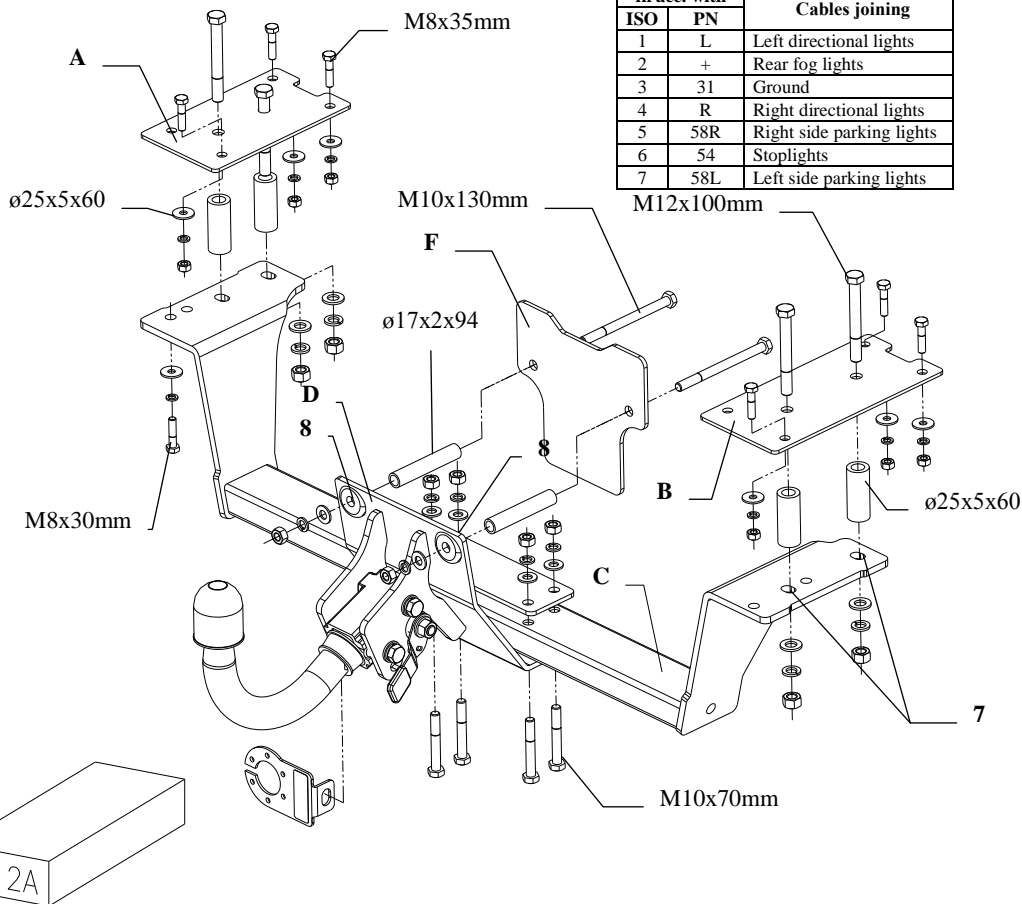


## FITTING INSTRUCTION

Clamp mark in acc. with		Cables joining
ISO	PN	
1	L	Left directional lights
2	+	Rear fog lights
3	31	Ground
4	R	Right directional lights
5	58R	Right side parking lights
6	54	Stoplights
7	58L	Left side parking lights



This towbar is designed to assembly in following car:  
**FIAT MAREA WEEKEND ESTALE (185)**, produced since 10.1996 till 10.2002, catalogue no. **R12A** and is prepared to tow trailers max total weight **1400 kg** and max vertical load **70 kg**.

### From manufacturer

Thank you for buying our product. Their reliability has been confirmed in many tests. Reliability of towbar depends also on correct assembly and right operation. For this reasons we kindly ask to read carefully this instruction and apply to hints.

*The towbar should be install in points described by a car producer.*

## The instruction of the assembly

1. Take out the spare wheel and floor fading from floor of boot.
2. Unscrew shanks to baggage fixing (nearer the car end) next disassemble the bumper (only movable part), thermal shield and original tow eye (tow eye will be not used any more).
3. In the trunk put fish-plates A and B on the left and on the right side as showed on the drawing 2, next screw it through hole pos. 1 by bolts M8x35 (in places of shanks baggage fixing).
4. Place fish-plates according with figure no. 2, next mark all holes on boot floor and drill it using bit ø12,5mm-holes pos. 2 and 3, next using bit ø8,5mm drill holes (pos. 4, 5, 6). Drill all holes straight through.
5. Unscrew both fish-plates. Made holes pos. 2 and 3 drill again by bit ø25,5; in made holes put distance sleeves ø25x5x60mm
6. Put fish-plates again. Through holes pos. 2 and 3 slip bolts M12x100, in remaining holes slip bolts M8x35. Bolts M8 screw with floor using plain washers ø25xø9x3 and spring washers.
7. From below the car, on protruding bolts put main bar of the towbar (pos. C) and fix it.
8. Through holes pos. 7 screw bolts M8 remaining after original tow eye disassemble.
9. To part pos. C put part pos. D and screw it using four bolts M10x70mm as shown on the drawing.
10. Holes pos. 8 drill straight through by bit ø10,5mm (make very carefully).
11. Disassemble part pos. D.
12. Drill again made holes (only from outside!) by bit ø17 and next slip distance sleeves ø17x94mm.
13. From inside of the boot put fish-plate pos. F, put in bolts M10x130mm
14. Put again part pos. D.
15. Mount muffler's handle (cut out his fragments), then thermal shield and bumper.
16. Fix body of the automat and the socket plate using bolts from accessories. Place tow-ball according to supplied instruction.
17. Tighten all bolts according to the torque shown in the table.
18. Connect electric wires of 7-poles socket according to the instruction of the car. (Recommend to make at authorized service station)
19. Complete paint layer damaged during installation.

Torque settings for nuts and bolts (8,8):

<b>M8</b>	25 Nm	<b>M10</b>	55 Nm
<b>M12</b>	85 Nm	<b>M14</b>	135 Nm

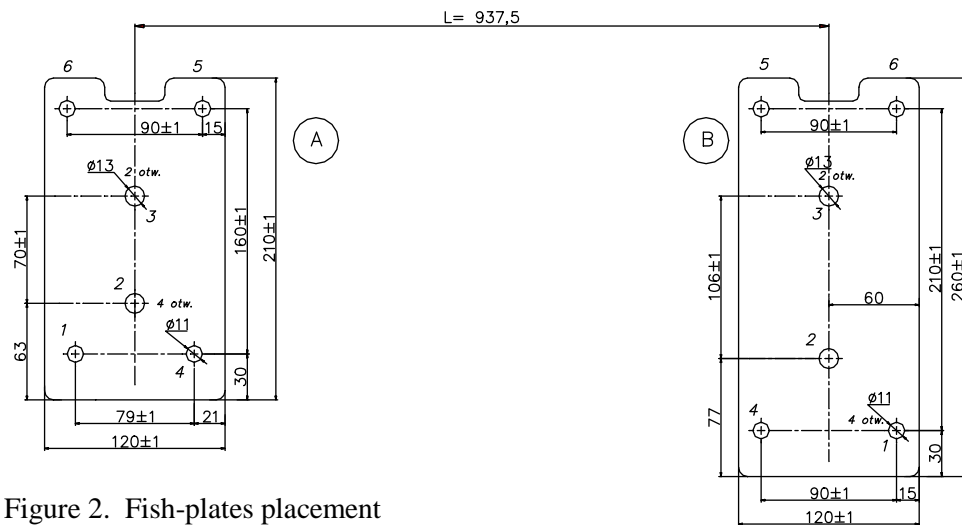


Figure 2. Fish-plates placement

### NOTE

After install the towbar you should get adequate note in registration book (at authorised service station). The car should be equipped with:

- Indicators
- Tow mirrors

After 1000km of exploitation check all bolts and nuts. The ball of towbar must be always kept clear and conserve with a grease.



**PPUH AUTO-HAK S. J.**

Produkcja Zaczepów Kulowych  
Henryk & Zbigniew Nejman  
76-200 SŁUPSK ul. Słoneczna 16K  
tel/fax (059) 8-414-414; 8-414-413  
E-mail: [office@autohak.com.pl](mailto:office@autohak.com.pl)  
[www.autohak.com.pl](http://www.autohak.com.pl)

### Towing hitch (without electrical set)

Class: **A50-X** Cat. no. **R12A**

Designed for:

Manufacturer: **FIAT**

Model: **MAREA WEEKEND**

Type: **ESTATE (185)**

produced since 10.1996 till 10.2002

Technical data:

**D-value: 8,02 kN**

maximum trailer weight: **1400 kg**

maximum vertical cup load: **70 kg**

**Approval number according to Directive 94/20/EC: e20\*94/20\*0814\*00**

### Foreword

This towbar is designed according to rules of safety traffic regulations. The towing hitch is a safety component and can be install only by qualified personnel. Any alteration or conversion of the towing hitch is prohibited and would lead to cancellation of design certification. Remove insulating compound and underseal from vehicle (if present) in the area of the matting surfaces of the towing hitch. The vehicle manufacturer's specifications regarding trailer load and max. vertical cup load are decisive for driving whereat values for the towing hitch cannot be exceeded.

*D-value formula:*

$$\frac{\text{Max trailer weight [kg]} \times \text{Max vehicle weight [kg]}}{\text{Max trailer weight [kg]} + \text{Max vehicle weight [kg]}} \times \frac{9,81}{1000} = D \text{ [kN]}$$